

Direct Forklift and Equipment

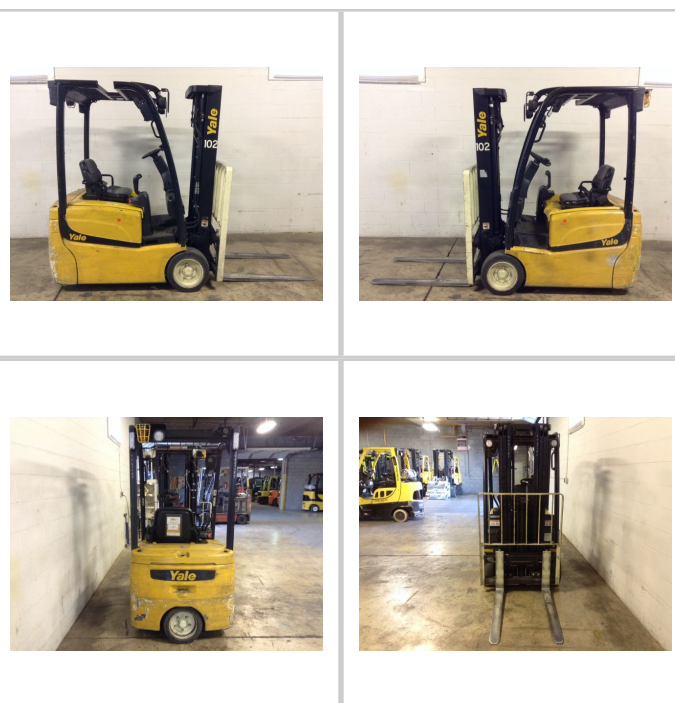
7885 Southern Blvd, Boardman OH 44512

www.directforklift.com

330.726.4050

YT2778J

Make	YALE
Model	ERP030VTN36TE082
Serial Number	G807N02778J
Year	2011
Hours	5223
Capacity	3000
Tire Type	Cushion
Fuel	ELECTRIC
Hydraulic Controls	Hood
Hydraulic Functions	Three
Mast Height Lowered	82
Max Lift Height	187
Free Lift	Yes
Mast Stage	Three
Fork Length	42
Drive Tire Size	18x7x12-1/8
Steer Tire Size	15x5x11-1/4
Attachments	Side Shift 39"w
Key Included?	Yes
Weight	5620
Battery Included	Yes
Battery Voltage	36
Unit Operating?	Yes
Overall Rating	Fair
Overall Appearance	Good



Fork Condition	Good
Upright Condition	Good
Lift Cylinder Condition	Good
Hydraulics Condition	Good
Carriage Condition	Good
Drive Axle Condition	Good
Brakes Condition	Good
Parking Brake Condition	Good
Shift Action Condition	Good
Steer Axle Condition	Good
Sheet Metal Condition	Good
Drive Tire Condition	Worn
Drive Tire Tread	60%
Steer Tire Condition	Worn
Steer Tire Tread	95%
Electrical System Condition	Good
Seat Condition	Torn
Lights Condition	Good
Drive Motor	Good
Hydraulic Pump Motor	Good
Pwr Strg Motor	Good
Traction Hours	5221
Hydraulic Hours	4659

Shipping dimensions in inches (")

Length	75	Add fork length or attachment dimensions when applicable
Width	45	
Height	85	

Contact us for additional information on this unit!!!