

Direct Forklift and Equipment

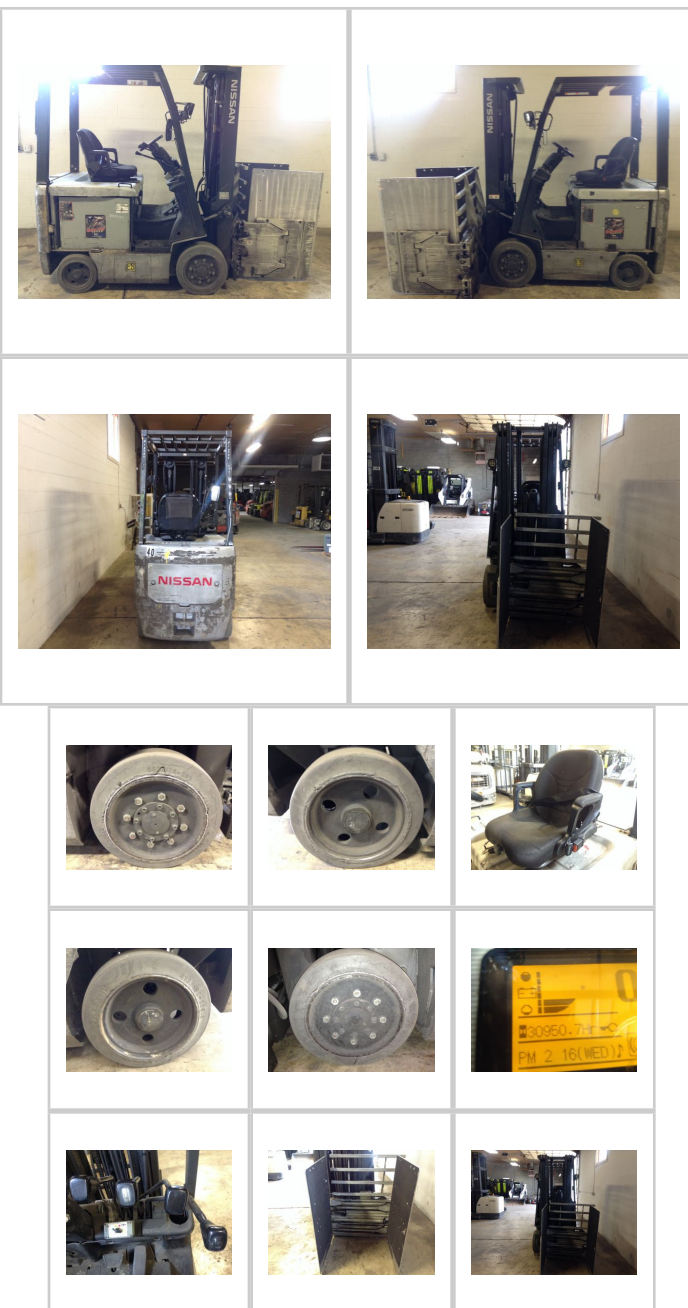
7885 Southern Blvd, Boardman OH 44512

www.directforklift.com

330.726.4050

NI0589

Make	NISSAN
Model	MCP1B2L20S
Serial Number	CP1B2-9C0589
Year	2010
Hours	30951
Capacity	4000
Tire Type	Cushion
Fuel	ELECTRIC
Hydraulic Controls	Cowl
Hydraulic Functions	Four
Mast Height Lowered	89
Max Lift Height	203
Free Lift	Yes
Mast Stage	Three
Fork Length	
Drive Tire Size	21x7x15
Steer Tire Size	16.25x6x11.25
Attachments	Clamp w/side shift
Key Included?	Yes
Weight	7275
Battery Included	Yes
Battery Voltage	36
Unit Operating?	Yes
Overall Rating	Fair
Overall Appearance	Fair



Fork Condition	
Upright Condition	Good
Lift Cylinder Condition	Good
Hydraulics Condition	Good
Carriage Condition	Good
Drive Axle Condition	Good
Brakes Condition	Good
Parking Brake Condition	Needs Attn
Shift Action Condition	Good
Steer Axle Condition	Good
Sheet Metal Condition	Fair
Drive Tire Condition	Worn
Drive Tire Tread	60%
Steer Tire Condition	Worn
Steer Tire Tread	75%
Electrical System Condition	Good
Seat Condition	Good
Lights Condition	Good
Drive Motor	Good
Hydraulic Pump Motor	Good
Pwr Strg Motor	Good

Shipping dimensions in inches (")

Length	90	Add fork length or attachment dimensions when applicable
Width	48	
Height	90	

Contact us for additional information on this unit!!!