

# Direct Forklift and Equipment

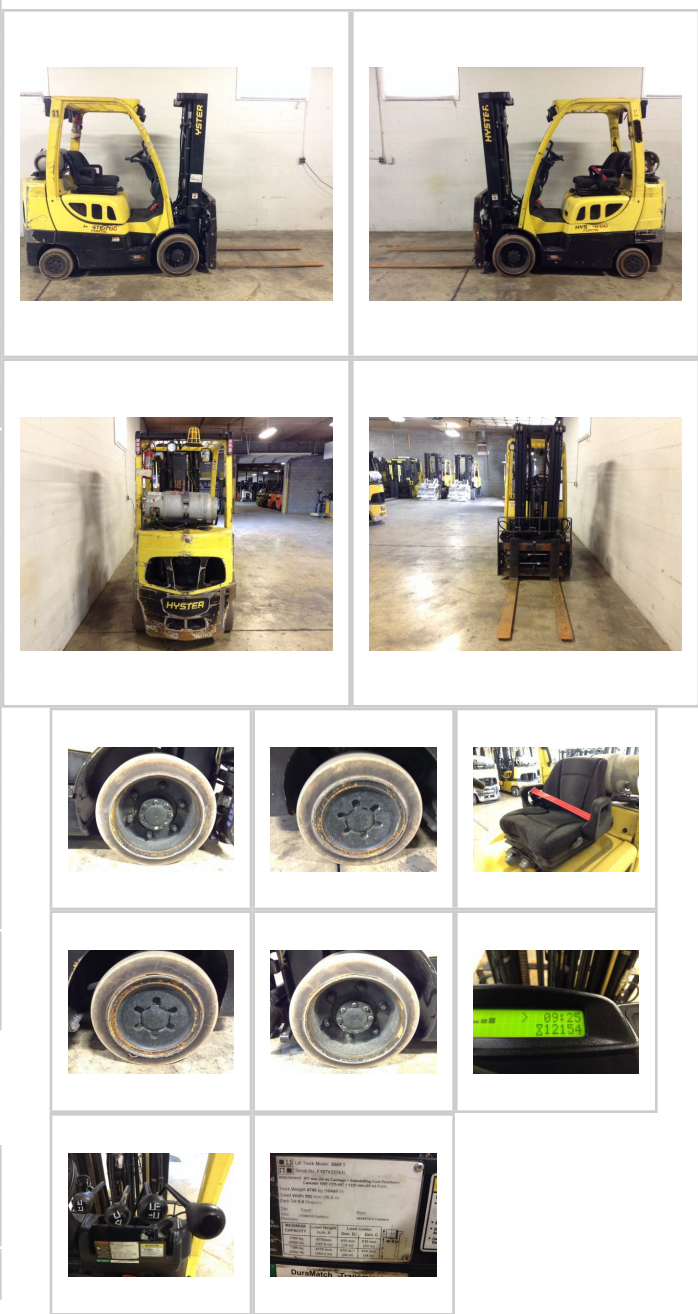
7885 Southern Blvd, Boardman OH 44512

[www.directforklift.com](http://www.directforklift.com)

330.726.4050

HY2761L

|                     |                                  |
|---------------------|----------------------------------|
| Make                | HYSTER                           |
| Model               | S60FT                            |
| Serial Number       | F187V22761L                      |
| Year                | 2013                             |
| Hours               | 12154                            |
| Capacity            | 6000                             |
| Tire Type           | Cushion                          |
| Fuel                | LP                               |
| Hydraulic Controls  | Cowl                             |
| Hydraulic Functions | Four                             |
| Mast Height Lowered | 88                               |
| Max Lift Height     | 187.8                            |
| Free Lift           | Yes                              |
| Mast Stage          | Three                            |
| Fork Length         | 59                               |
| Drive Tire Size     | 21x8x15                          |
| Steer Tire Size     | 16x6x10.5                        |
| Attachments         | fork positioner/side shift 41" w |
| Key Included?       | Yes                              |
| Weight              | 10440                            |
| Unit Operating?     | Yes                              |
| Overall Rating      | Fair                             |
| Overall Appearance  | Good                             |



|                             |      |
|-----------------------------|------|
| Fork Condition              | Good |
| Upright Condition           | Good |
| Lift Cylinder Condition     | Good |
| Hydraulics Condition        | Good |
| Carriage Condition          | Good |
| Drive Axle Condition        | Good |
| Brakes Condition            | Good |
| Parking Brake Condition     | Good |
| Shift Action Condition      | Good |
| Steer Axle Condition        | Good |
| Sheet Metal Condition       | Fair |
| Drive Tire Condition        | Worn |
| Drive Tire Tread            | 75%  |
| Steer Tire Condition        | Worn |
| Steer Tire Tread            | 50%  |
| Electrical System Condition | Good |
| Seat Condition              | Good |
| Lights Condition            | Good |
| Engine Condition            | Good |
| Cooling System Condition    | Good |

**Shipping dimensions in inches (")**

|        |     |  |
|--------|-----|--|
| Length | 100 | Add fork length or attachment dimensions when applicable |
| Width  | 48  |  |
| Height | 90  |  |

Contact us for additional information on this unit!!!