

Direct Forklift and Equipment

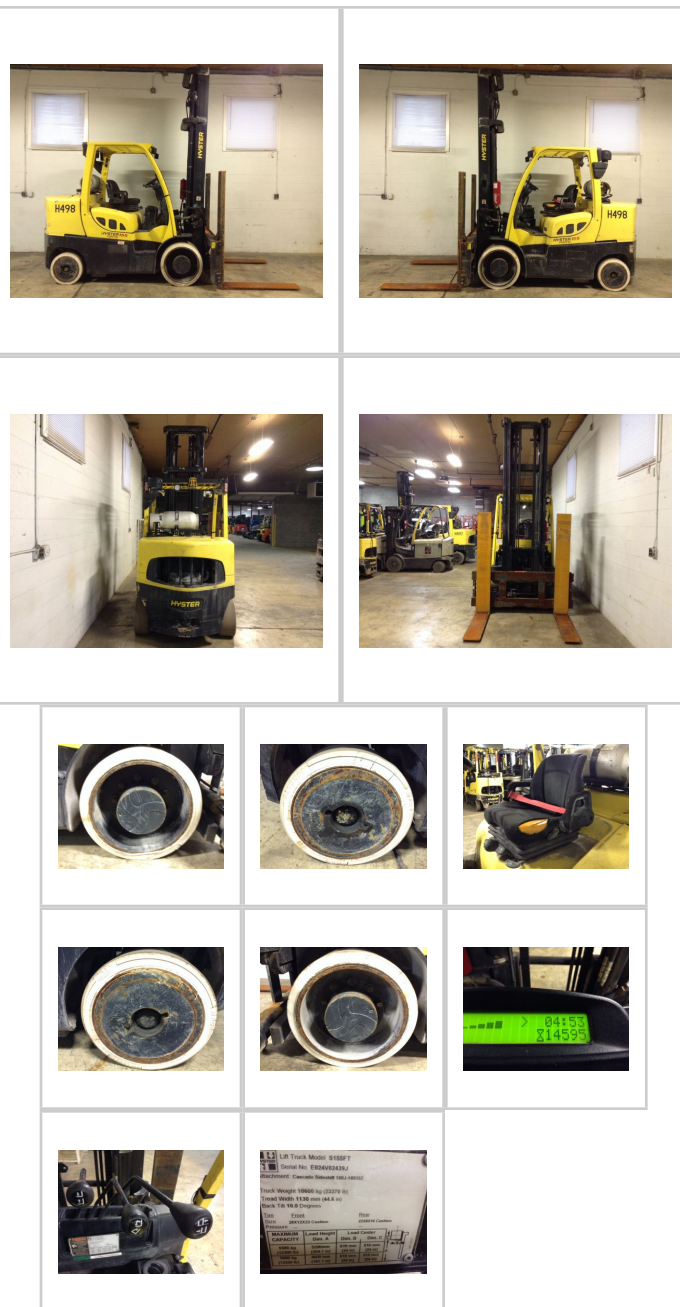
7885 Southern Blvd, Boardman OH 44512

www.directforklift.com

330.726.4050

HY2439J

Make	HYSTER
Model	S155FT
Serial Number	E024V02439J
Year	2011
Hours	14595
Capacity	15500
Tire Type	Cushion
Fuel	LP
Hydraulic Controls	Cowl
Hydraulic Functions	Three
Mast Height Lowered	141.5
Max Lift Height	204.7
Free Lift	No
Mast Stage	Two
Fork Length	47
Drive Tire Size	28x12x22
Steer Tire Size	22x8x16
Attachments	Integrated SS 74" w
Key Included?	Yes
Weight	23370
Unit Operating?	Yes
Overall Rating	Fair
Overall Appearance	Good



Fork Condition	Good
Upright Condition	Good
Lift Cylinder Condition	Good
Hydraulics Condition	Good
Carriage Condition	Good
Drive Axle Condition	Good
Brakes Condition	Good
Parking Brake Condition	Good
Shift Action Condition	Good
Steer Axle Condition	Good
Sheet Metal Condition	Good
Drive Tire Condition	Worn
Drive Tire Tread	25%
Steer Tire Condition	Worn
Steer Tire Tread	25%
Electrical System Condition	Good
Seat Condition	Torn
Lights Condition	Good
Engine Condition	Good
Cooling System Condition	Good

Shipping dimensions in inches (")

Length	125	Add fork length or attachment dimensions when applicable
Width	78	
Height	142	

Contact us for additional information on this unit!!!