

# Direct Forklift and Equipment

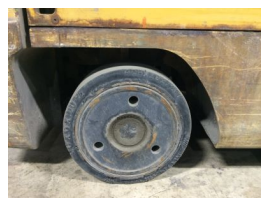
7885 Southern Blvd, Boardman OH 44512

[www.directforklift.com](http://www.directforklift.com)

330.726.4050

CT0249-E6000

Make	CAT
Model	E6000
Serial Number	A4EC380249
Year	2008
Hours	8089
Capacity	6000
Tire Type	Cushion
Fuel	ELECTRIC
Hydraulic Controls	Cowl
Hydraulic Functions	Three
Mast Height Lowered	86
Max Lift Height	200
Free Lift	Yes
Mast Stage	Three
Fork Length	42"
Drive Tire Size	21x8x15
Steer Tire Size	16x6x10-1/2
Attachments	38" sideshift
Key Included?	Yes
Weight	11495
Battery Included	Yes
Battery Voltage	36
Unit Operating?	Yes
Overall Rating	Fair
Overall Appearance	Fair



Fork Condition	Broken Tips
Upright Condition	Good
Lift Cylinder Condition	Good
Hydraulics Condition	Good
Carriage Condition	Good
Drive Axle Condition	Good
Brakes Condition	Good
Parking Brake Condition	Good
Shift Action Condition	Good
Steer Axle Condition	Good
Sheet Metal Condition	Fair
Drive Tire Condition	Worn
Drive Tire Tread	30%
Steer Tire Condition	Worn
Steer Tire Tread	20%
Electrical System Condition	
Seat Condition	Torn
Lights Condition	Good
Drive Motor	Good
Hydraulic Pump Motor	Good
Pwr Strg Motor	Good
Traction Hours	6495
Hydraulic Hours	1494

Contact us for additional information on this unit!!!