

Direct Forklift and Equipment

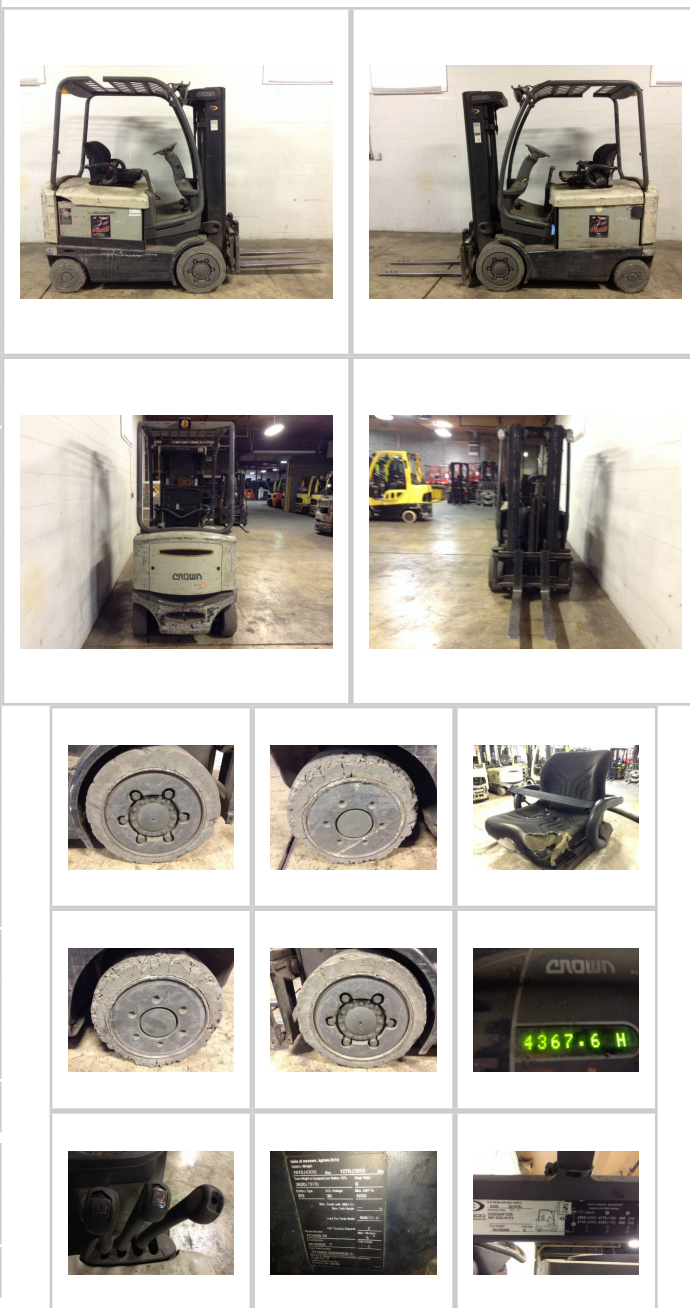
7885 Southern Blvd, Boardman OH 44512

www.directforklift.com

330.726.4050

CR5200

Make	CROWN
Model	FC4520-50
Serial Number	9A155200
Year	
Hours	4368
Capacity	5000
Tire Type	Cushion
Fuel	ELECTRIC
Hydraulic Controls	Hood
Hydraulic Functions	Three
Mast Height Lowered	84
Max Lift Height	188
Free Lift	Yes
Mast Stage	Three
Fork Length	42
Drive Tire Size	21x8x15
Steer Tire Size	16x6x10.5
Attachments	side shift 38"w
Key Included?	Yes
Weight	7978
Battery Included	Yes
Battery Voltage	48
Unit Operating?	Yes
Overall Rating	Fair
Overall Appearance	Fair



Fork Condition	Good
Upright Condition	Good
Lift Cylinder Condition	Good
Hydraulics Condition	Noisy
Carriage Condition	Good
Drive Axle Condition	Good
Brakes Condition	Good
Parking Brake Condition	Good
Shift Action Condition	Good
Steer Axle Condition	Good
Sheet Metal Condition	Good
Drive Tire Condition	Worn
Drive Tire Tread	60%
Steer Tire Condition	Worn
Steer Tire Tread	50%
Electrical System Condition	Good
Seat Condition	Torn
Lights Condition	Good
Drive Motor	Good
Hydraulic Pump Motor	Noisy
Pwr Strg Motor	Good
Hydraulic Hours	650

Shipping dimensions in inches (")

Length	90	Add fork length or attachment dimensions when applicable
Width	52	
Height	90	

Contact us for additional information on this unit!!!