

Direct Forklift and Equipment

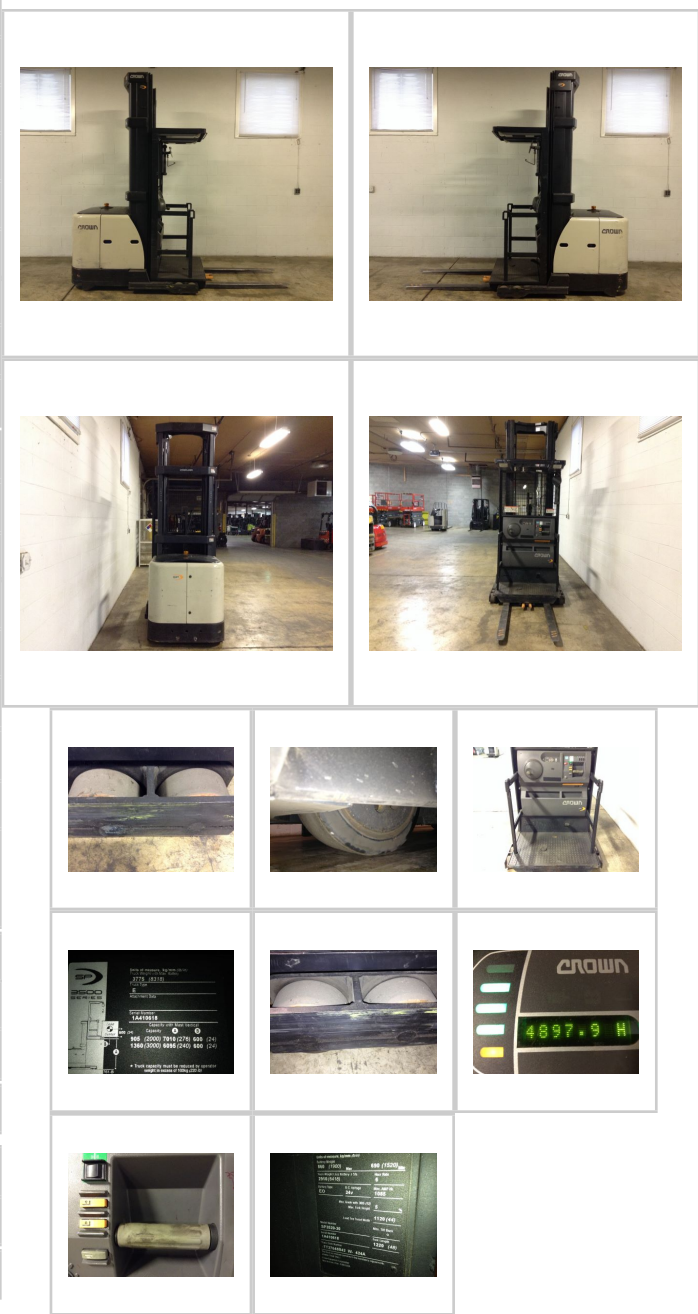
7885 Southern Blvd, Boardman OH 44512

www.directforklift.com

330.726.4050

CR0618

Make	CROWN
Model	SP3520-30
Serial Number	1A410618
Year	
Hours	4898
Capacity	3000
Tire Type	Cushion
Fuel	ELECTRIC
Hydraulic Controls	Hand Control
Hydraulic Functions	One
Mast Height Lowered	119
Max Lift Height	276
Free Lift	Yes
Mast Stage	Three
Fork Length	48
Drive Tire Size	
Steer Tire Size	
Attachments	
Key Included?	Yes
Weight	6418
Battery Included	Yes
Battery Voltage	24
Unit Operating?	Yes
Overall Rating	Fair
Overall Appearance	Good



Fork Condition	Good
Upright Condition	Good
Lift Cylinder Condition	Good
Hydraulics Condition	Good
Carriage Condition	Good
Drive Axle Condition	Good
Brakes Condition	Good
Parking Brake Condition	Good
Shift Action Condition	Good
Steer Axle Condition	Good
Sheet Metal Condition	Good
Drive Tire Condition	Good
Drive Tire Tread	75%
Steer Tire Condition	
Steer Tire Tread	
Electrical System Condition	Good
Seat Condition	
Lights Condition	Good
Drive Motor	Good
Hydraulic Pump Motor	Good
Pwr Strg Motor	Good
Traction Hours	6720
Hydraulic Hours	944

Shipping dimensions in inches (")

Length	77	Add fork length or attachment dimensions when applicable
Width	48.5	
Height	119	

Contact us for additional information on this unit!!!