

# Direct Forklift and Equipment

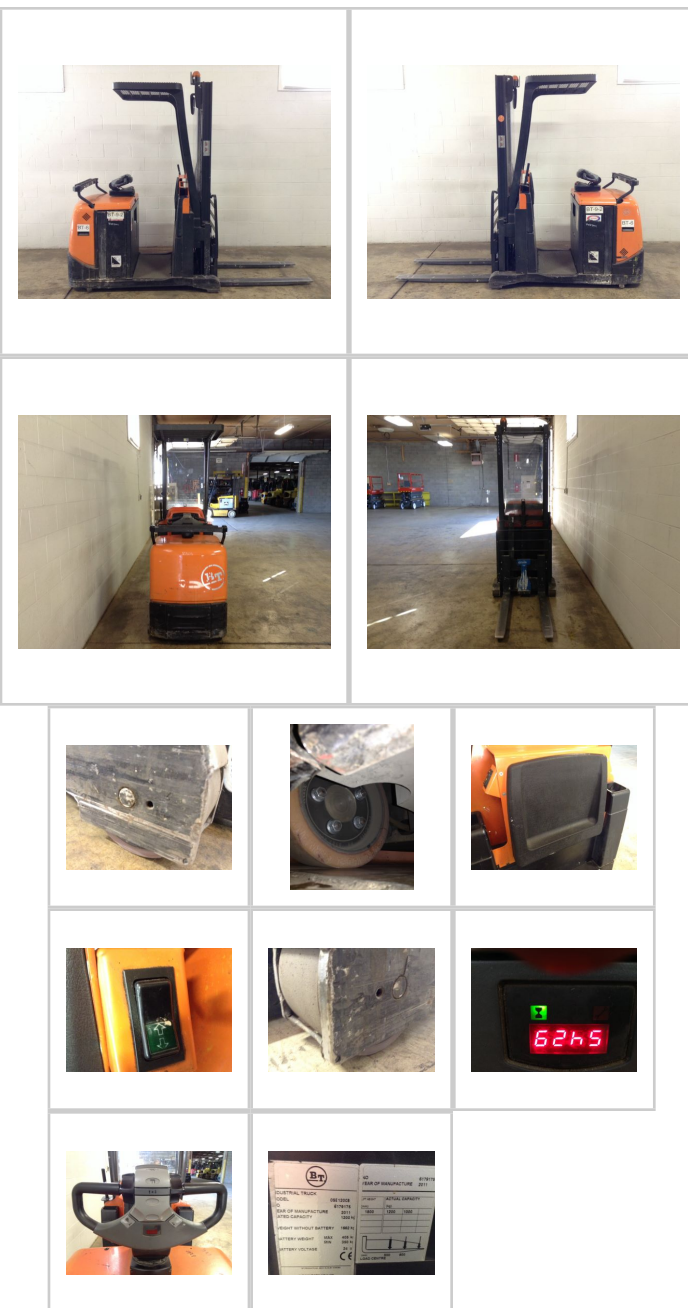
7885 Southern Blvd, Boardman OH 44512

www.directforklift.com

330.726.4050

BT9175

Make	BT
Model	OSE120CB
Serial Number	6719175
Year	2011
Hours	5429
Capacity	2645
Tire Type	Cushion
Fuel	ELECTRIC
Hydraulic Controls	Hand Control
Hydraulic Functions	One
Mast Height Lowered	88
Max Lift Height	71
Free Lift	Yes
Mast Stage	One
Fork Length	43
Drive Tire Size	
Steer Tire Size	
Attachments	
Key Included?	No
Weight	3664
Battery Included	Yes
Battery Voltage	24
Unit Operating?	Yes
Overall Rating	Fair
Overall Appearance	Good



Fork Condition	Good
Upright Condition	Good
Lift Cylinder Condition	Good
Hydraulics Condition	Good
Carriage Condition	Good
Drive Axle Condition	Noisy
Brakes Condition	Good
Parking Brake Condition	Good
Shift Action Condition	Good
Steer Axle Condition	Good
Sheet Metal Condition	Good
Drive Tire Condition	Worn
Drive Tire Tread	35%
Steer Tire Condition	
Steer Tire Tread	
Electrical System Condition	Good
Seat Condition	Good
Lights Condition	Good
Drive Motor	Noisy
Hydraulic Pump Motor	Good
Pwr Strg Motor	Noisy

**Shipping dimensions in inches (")**

Length	70	Add fork length or attachment dimensions when applicable
Width	36	
Height	94	

Contact us for additional information on this unit!!!